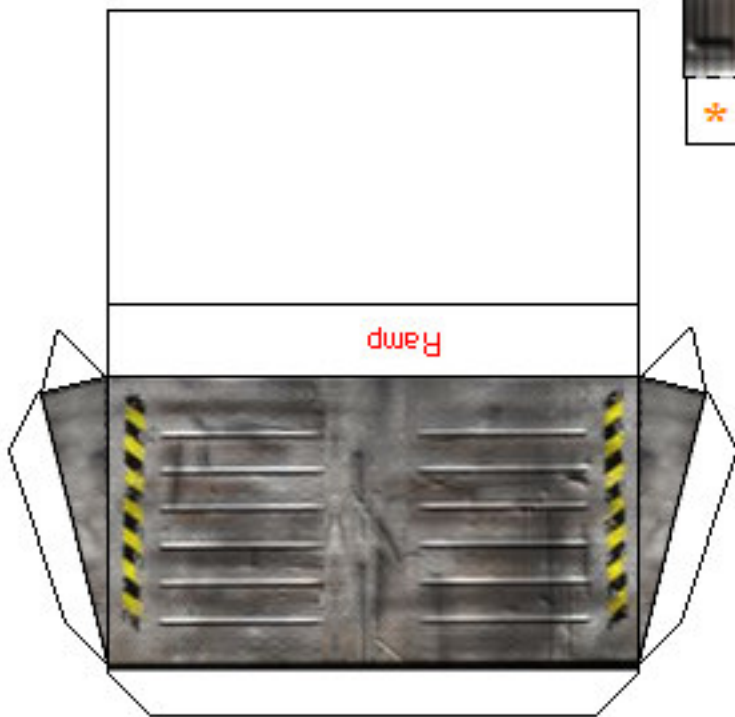
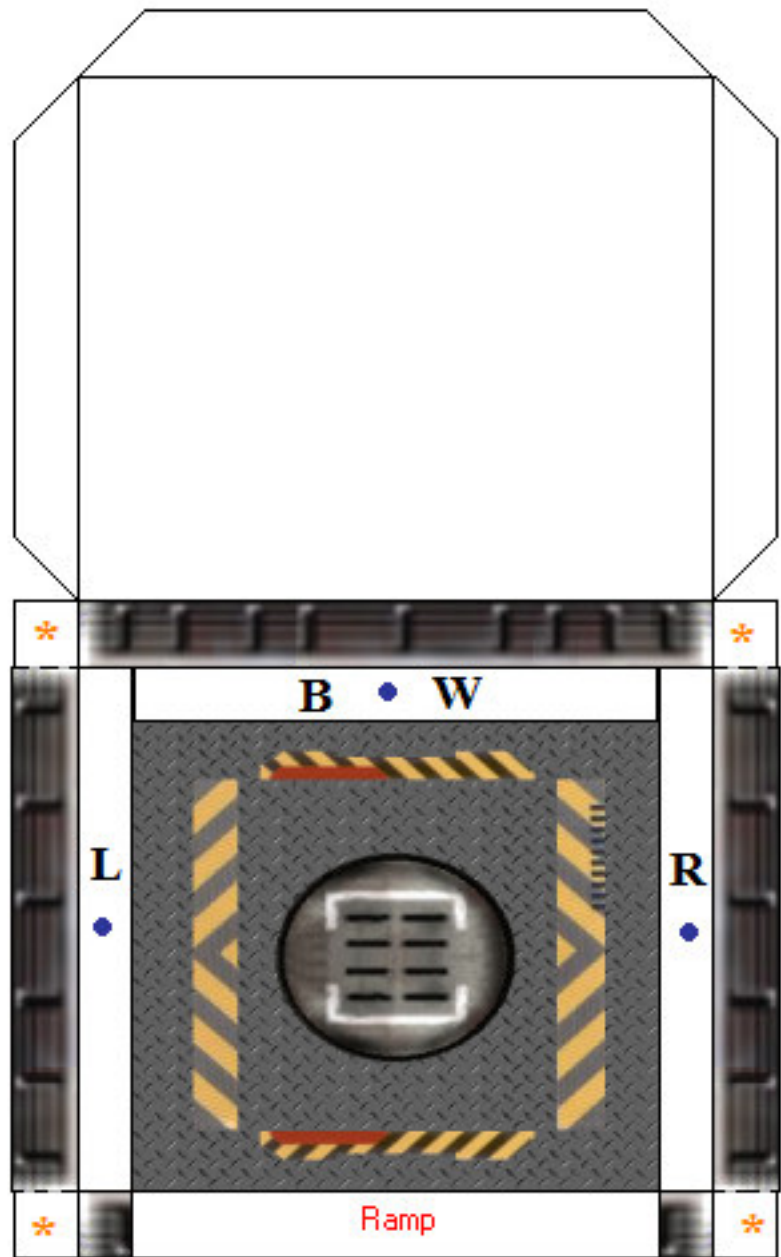
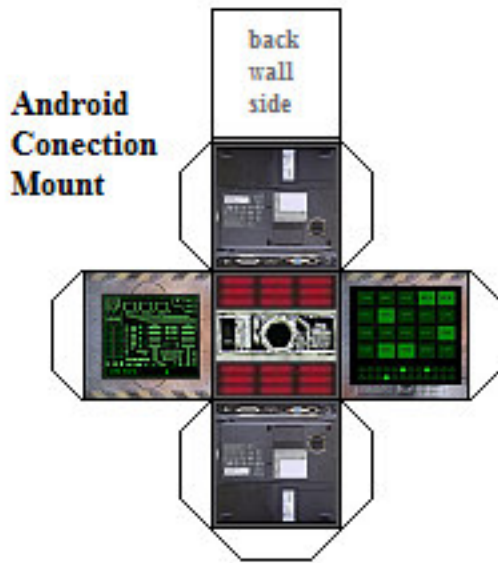


# Alcove Foundation, Ramp, and Android connection point

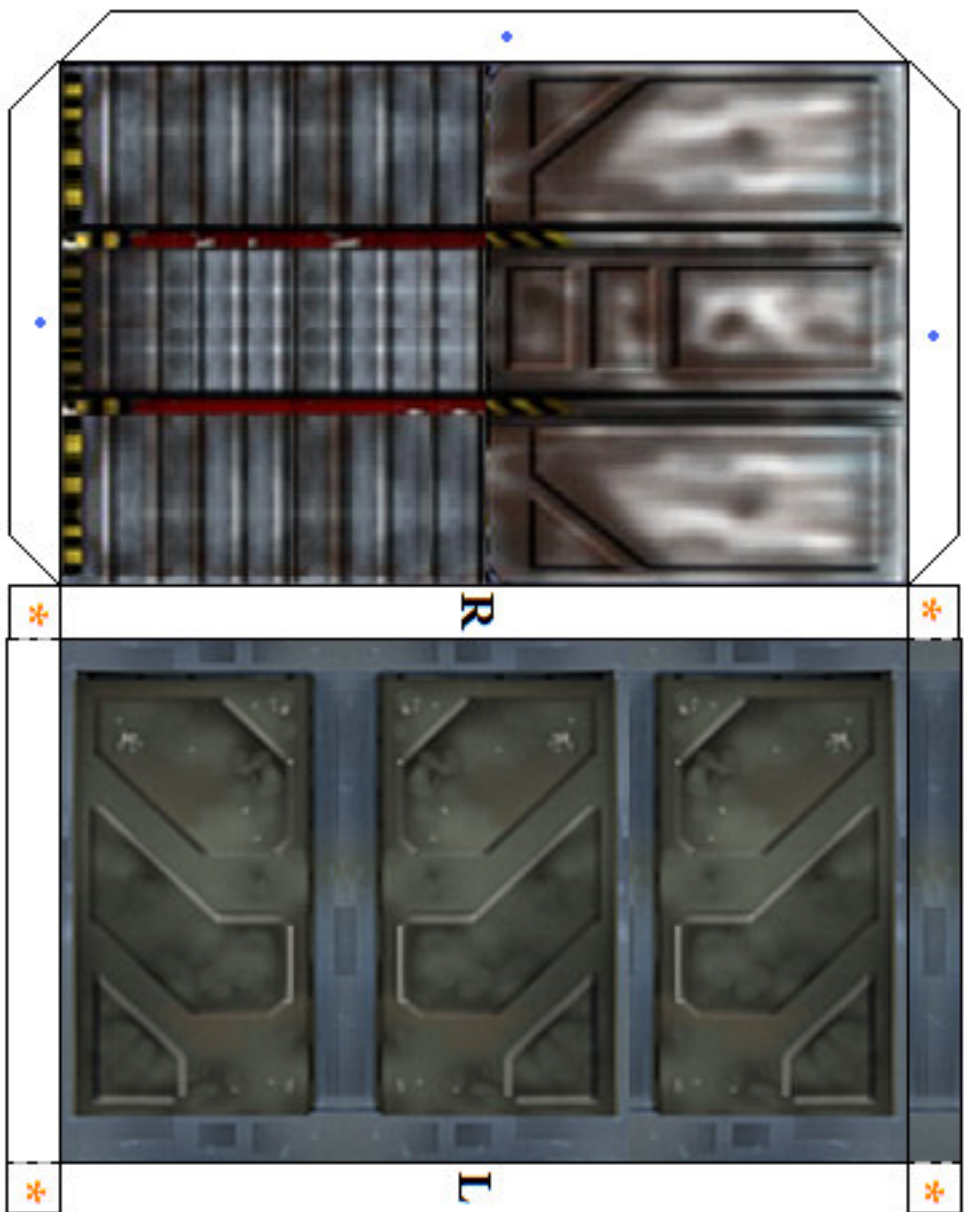
Mount connection point anywhere  
on the back wall to line up with any  
android's back you want to use



All tabs on each section mark  
with a orange \* must be cut  
on the dotted line and fold so  
they go in side and inbetween  
the glue in tabs. it help with  
strength and make that  
section is air tight

Sections include page 1, 2, 3,  
and 4

# Back Wall





**Right Side**



**Left Side**

# Andriod Alcove Monitors

